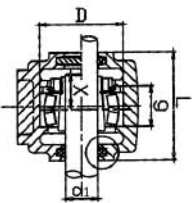
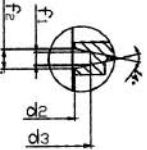
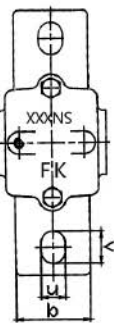
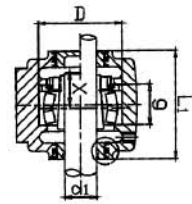


SN600



SSN600



Housing NO.	Dimensions (mm / in.)																	Bearing No.	Adapter Sleeve	Locating Ring		wt (kg)					
	d1	D	g	a	b	c	h	L	L1	W	m	s	u	v	x	d2	d3			f1	f2		Number	Qty			
SN605	20	3/4	62	34	185	52	22	50	80	83	92	150	M12	15	20	27	21.5	31	3.0	4.2	1305K 2305K	H305 HE305	HE305	SR62×8.5	2	2.10	
SN606	25	1	72	37	185	52	22	50	82	85	97	150	M12	15	20	27	26.5	38	4.0	5.4	1306K 2306K	H306 HE306	HE306	SR72×9	2	3.10	
SN607	30	1-1/8	80	41	205	60	25	60	90	93	112	70	M12	15	20	32	31.5	43	4.0	5.4	1307K 2307K	H307 HE307	HE307	SR80×10	2	3.73	
SN608	35	1-1/4	90	43	205	60	25	60	95	100	117	170	M12	15	20	34	36.5	48	4.0	5.4	1308K 2308K	H308 HE308	HE308	SR90×10	2	4.60	
SN609	40	1-1/2	100	46	255	70	28	70	105	110	132	210	M16	18	23	36	41.5	53	4.0	5.4	1309K 2309K	H309 HE309	HE309	SR100×10.5	2	5.70	
SN610	45	1-3/4	110	50	255	70	30	70	115	120	137	210	M16	18	23	39	46.5	58	4.0	5.4	1310K 2310K	H310 HE310	HE310	SR110×11.5	2	6.50	
SN611	50	2	120	53	275	80	30	80	120	125	150	230	M16	18	23	40	51.5	67	5.0	6.9	1311K 2311K	H311 HE311	HE311	SR120×12	2	6.80	
SN612	55	2-1/8	130	56	280	80	30	80	125	130	157	230	M16	18	23	44	56.5	72	5.0	6.9	1312K 2312K	H312 HE312	HE312	SR130×12.5	2	8.60	
SN613	60	2-1/4	140	58	315	90	32	95	130	135	175	260	M20	22	27	46	62.0	77	5.0	6.8	1313K 2313K	H313 HE313	HE313	SR140×12.5	2	11.1	
SN615	65	2-1/2	160	65	345	100	35	100	140	145	195	290	M20	22	27	51	67.0	82	5.0	6.8	1315K 2315K	H315 HE315	HE315	SR160×14	2	15.2	
SN616	70	2-3/4	170	68	345	100	35	112	145	150	212	290	M20	22	27	52	72.0	89	6.0	8.1	1316K 2316K	H316 HE316	HE316	SR170×14.5	2	17.8	
SN617	75	3	180	70	380	110	40	112	155	160	218	320	M24	26	32	56	77.0	94	6.0	8.1	1317K 2317K	H317 HE317	HE317	SR180×14.5	2	19.5	
SN618	80	3-1/4	190	74	400	110	33	112	160	165	226	320	M24	26	35	58	82.0	99	6.0	8.1	1318K 2318K	H318 HE318	HE318	SR190×15.5	2	25.3	
SN619	85		200	77	420	120	36	125	170	175	245	350	M24	26	35	60	87.0	104	6.0	8.1	1319K 2319K	H319 HE319	HE319	SR200×16	2	27.0	
SN620	90	3-1/2	215	83	420	120	38	140	175	180	275	350	M24	26	35	64	92.0	111	7.0	9.3	1320K 2320K	H320 HE320	HE320	SR215×18	2	32.0	
SN622	100	4	240	90	460	130	40	150	190	195	300	390	M24	28	38	69	102.0	125	8.0	10.8	1322K 2322K	H322 HE322	HE322	SR215×10	1	36.0	
SN624	110	4-1/4	260	96	540	160	50	160	205	210	320	450	M30	33	42	73	113.0	135	8.0	10.7		H324	HE324	SR260×10	2	54.6	
SN626	115	4-1/2	280	103	560	160	50	170	215	220	345	470	M30	33	42	77	118.0	140	8.0	10.7		H326	HE326	SR280×10	2	67.2	
SN628	125	5	300	112	630	170	55	180	235	240	370	520	M30	35	45	83	128.0	154	9.0	12.2		H328	HE328	SR300×10	2	78.0	
SN630	135	5-1/4	320	118	680	180	55	190	245	250	390	560	M30	35	45	88	138.0	164	9.0	12.2		H330	HE330	SR320×10	2	101.5	
SN632	140	5-1/2	340	124	710	190	60	200	255	260	410	580	M36	42	52	93	143.0	173	10.0	13.7		H332	HE332	SR340×10	2	122.3	
SSN632																										1	135.6

NOTES: 1. Foot of standard housing SSN type is solid without mounting holes or can be precast as 2-bolt (with prefix T) or 4-bolt mounting holes (with prefix F). 2. Tacnite seal will be supplied as optional for perfect arrangement in severe operating conditions to prevent contamination from fine abrasive dust. 3. ZF rubber seals can be supplied upon request.